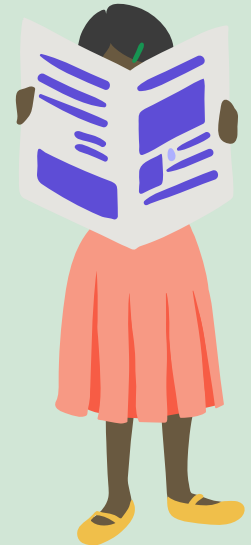


# Yukon

## 18+ SUPPORTS



### Yukon Social Assistance



Provides financial assistance to people who lack sufficient income for living expenses. The exact amount of social assistance to be received is determined by a social worker.



### Yukon Supplementary Allowance

The Supplementary Allowance amount is \$250 per month on top of the Social Assistance amount.

#### Resources

-  [Yukon Social Assistance](#)
-  [Yukon Supplementary Allowance](#)

It is important to note that resources presented in this Toolkit may have shifted from what is indicated; hence, you are strongly encouraged to check with school personnel in your local jurisdiction to ensure accuracy of information.